

2009-2010 UHS Wind Ensemble Auditions

CLARINET

Auditions for the 2009-2010 University High School Wind Ensemble will begin **WEDNESDAY, MARCH 25th**.

Students will be auditioned on the excerpt, on two randomly selected major scales listed (meaning that students should prepare all seven scales), on the chromatic scale, and on a sight reading piece to be determined.

All scales must be played from memory in the tempo and rhythm indicated.

Excerpt

Andante espressivo

J.S. Bach

$\text{♩} = 60$

mp

rit.

C Major (B \flat Concert)

$\text{♩} = 60$

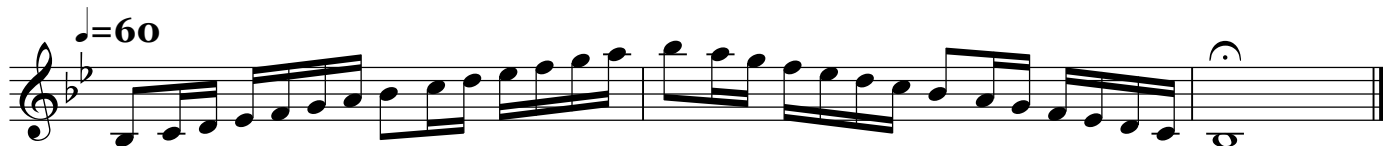
F Major (E \flat Concert)

$\text{♩} = 60$

G Major (F Concert)

$\text{♩} = 60$

OVER

D Major (C Concert)**A Major (G Concert)****B♭ Major (A♭ Concert)****E♭ Major (D♭ Concert)****Chromatic Scale**