

# 2009-2010 UHS Wind Ensemble Auditions

## F HORN

Auditions for the 2009-2010 University High School Wind Ensemble will begin **WEDNESDAY, MARCH 25th**.

Students will be auditioned on the excerpt, on two randomly selected major scales listed (meaning that students should prepare all seven scales), on the chromatic scale, and on a sight reading piece to be determined.

**All scales must be played from memory in the tempo and rhythm indicated.**

### Excerpt

#### Andante espressivo

J.S. Bach

$\text{♩} = 60$

The excerpt consists of two staves of music in 9/8 time. The first staff begins with a treble clef, a key signature of one flat (B-flat), and a 9/8 time signature. The tempo is marked 'Andante espressivo' with a metronome marking of quarter note = 60. The dynamics are marked 'mp' (mezzo-piano). The music features a series of eighth and sixteenth notes, with some slurs and accents. The second staff continues the piece, ending with a 'rit.' (ritardando) marking.

### F Major (B $\flat$ Concert)

The F Major scale is written on a single staff in 4/4 time. The key signature has one flat (B-flat). The tempo is marked with a metronome marking of quarter note = 60. The scale is written in a single line, starting on F4 and ending on F5.

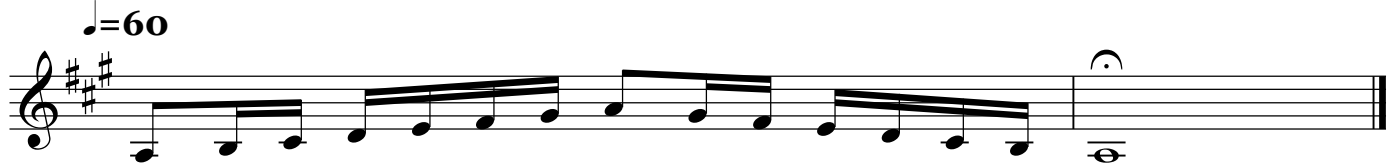
### B $\flat$ Major (E $\flat$ Concert)

The B-flat Major scale is written on a single staff in 4/4 time. The key signature has two flats (B-flat and E-flat). The tempo is marked with a metronome marking of quarter note = 60. The scale is written in a single line, starting on B-flat4 and ending on B-flat5.

### C Major (F Concert)

The C Major scale is written on a single staff in 4/4 time. The key signature has no flats. The tempo is marked with a metronome marking of quarter note = 60. The scale is written in a single line, starting on C4 and ending on C5.

**OVER**

**E $\flat$  Major (A $\flat$  Concert)****G Major (C Concert)****D Major (G Concert)****A Major (D $\flat$  Concert)****Chromatic Scale**