

# **UNIVERSITY HIGH SCHOOL BAND**



**2025-2026  
STUDENT HANDBOOK**

# TABLE OF CONTENTS

*Click on the title of each chapter for a bookmark to that section of the handbook.*

<a href="#"><u>Communications</u></a> .....	03
<a href="#"><u>UHS Instrumental Music Programs</u></a> .....	04
<a href="#"><u>Grading</u></a> .....	05
<a href="#"><u>Discipline</u></a> .....	06
<a href="#"><u>Attendance and Punctuality</u></a> .....	06
<a href="#"><u>How to Get an Absence Excused</u></a> .....	07
<a href="#"><u>Sports Conflicts</u></a> .....	08
<a href="#"><u>Uniforms</u></a> .....	09
<a href="#"><u>Concert Attire</u></a> .....	10
<a href="#"><u>Financial Responsibilities</u></a> .....	11
<a href="#"><u>Fundraising Opportunities</u></a> .....	12
<a href="#"><u>Volunteer Opportunities</u></a> .....	12
<a href="#"><u>Student Accounts</u></a> .....	14
<a href="#"><u>Financial Assistance</u></a> .....	14
<a href="#"><u>Delinquent Accounts</u></a> .....	14
<a href="#"><u>Charms Office Assistant</u></a> .....	15
<a href="#"><u>Instrument Care</u></a> .....	16
<a href="#"><u>Summer Band</u></a> .....	17

# COMMUNICATIONS

## **Band Website - [www.uhsband.net](http://www.uhsband.net)**

The UHS Band Boosters website is the primary hub for all band communications. The site includes links to most everything students and families need to know, including schedules, photos, forms, the UHS Band Handbook, information about the directors and Band Boosters, guard and percussion information, Incoming Freshmen Frequently Asked Questions, and more.

## **Remind**

Remind is our quickest and most efficient communication tool. We recommend all students and parents sign up ASAP. We use Remind to communicate directly with students and parents from the start of summer band. Messages are sent directly to users' phones. We typically limit announcements to important, time-sensitive information. [Click here](#) for instructions for all Remind Classrooms.

**Please note that Mr. Orban does not receive messages on Remind. Please direct ALL of Mr. Orban's correspondence to his email listed below.**

## **Google Classroom**

A classroom tool for students, we post announcements, assignments, instruction and demonstration videos, and other educational material.

## **Schoology**

Used for grading and student-teacher-parent communication.

## **[mpalmer@k12.wv.us](mailto:mpalmer@k12.wv.us) and [corey.orban@k12.wv.us](mailto:corey.orban@k12.wv.us)**

Director emails. Though all teachers have accounts through Google ending in "boe.mono.k12.wv.us," the band directors recommend using their "k12" addresses for band communications as it is difficult to keep up with too many email accounts. K12 email is the ONLY method for contacting Mr. Orban.

# UHS INSTRUMENTAL MUSIC PROGRAMS

## Marching Band:

A co-curricular ensemble consisting of members of all curricular ensembles that includes summer band, in-school and after-school rehearsals, and performances. The Marching Band is the most active ensemble at UHS and is the program's most important public-relations tool. Students must participate in the Marching Band to be eligible to participate in any other UHS band ensembles, either by marching in the field show (along with parades), or parade-only if the student plays a fall sport.

## Concert Band:

A traditional, full-instrumentation band class that performs literature based on the ability level of the ensemble. Concert Band is open to all wind players and percussionists without audition. Concert Band percussionists should also take at least one year of Percussion Ensemble, most often during their first year at UHS. All members also participate in Marching Band.

## Symphonic Winds:

Audition-only band class for wind players and percussionists that performs advanced concert band repertoire. Symphonic Winds percussionists should also take at least one year of Percussion Ensemble, most often during their first year at UHS. All members also participate in Marching Band.

## Marching Band OT:

Marching Band OT (Outside Time) was created to accommodate students who wish to participate in band, but cannot fit regular band classes into their schedule. The class takes place during the fall semester, students receive ½ credit toward graduation, and grades are based on participation in after-school rehearsals and performances. **Students must have an obvious scheduling conflict and receive teacher approval to sign up for Marching Band OT.**

## Jazz Ensemble:

Jazz Ensemble is an audition-only, traditional big band consisting of saxophones, trombones, trumpets, and a rhythm section. Students will have the opportunity to perform many different jazz styles. All members will also participate in Marching Band.

## Percussion Ensemble:

Percussion Ensemble is one of the school's chamber ensembles. Students of the ensemble learn a variety of music - from classical music to pop music - and play percussion instruments such as marimbas, xylophones, snare and bass drum, timpani, trash cans, buckets, and more. Most percussion students should take at least one year of Percussion Ensemble in addition to Concert Band or Symphonic Winds. Students wishing to enroll in Percussion Ensemble must be a member of the band program, get director approval, and participate in Marching Band.

## Other Ensembles:

Both curricular and extracurricular, these groups vary from year to year, and have included percussion ensemble, jazz combo, brass ensemble, Mariachi band, African drum and dance, Taiko ensemble, and others. These groups may perform at concerts and/or audition to perform as WVMEA Honor X-Ensembles at the state music conference.

## Color Guard:

An audition-only group that consists of members working with flags, rifles, sabers, and batons. The guard performs primarily with Marching Band. Guard members must be enrolled in either Concert Band, Symphonic Winds, Percussion Ensemble, Jazz Ensemble, or Marching Band OT.

## GRADING

UHS Band grades are based primarily on participation and effort, not ability level. Students who participate fully and appropriately and turn in assignments on time can expect to receive an "A." Students who *DO NOT* participate fully and appropriately and/or *DO NOT* turn in assignments on time (or at all) can expect to receive a grade lower than "A."

### Grading Criteria for Band Classes:

1. In-school class participation
2. Participation in after-school rehearsals and performances when applicable
3. In-school and Google Classroom assignments

### Impact of Attendance on Grading:

#### ATTENDANCE IS MANDATORY FOR ALL SCHEDULED REHEARSALS AND PERFORMANCES

Band is a **co-curricular** activity, meaning that unlike regular **curricular** classes, band activities often take place outside of school hours - and unlike **extracurricular** sports, band activities are graded.

Students who are in school during the day are expected to participate in all scheduled after-school rehearsals and performances. Because grades are based primarily on attendance, the single most important action students can take to earn an "A" in band is to avoid **unexcused absences**.

**Note: Unexcused absences from band CLASSES affect students' in-school participation grade.**

For an absence to be considered "excused," students and/or parents must notify the directors by filling out the **EXCUSED ABSENCE FORM in advance** of any absences. The determination of whether an absence may be excused will be based on Monongalia County Schools policy. Excused absences during the school day apply to after-school rehearsals, so parents **DO NOT** need to complete this form for regular school-day absences.

For after-school rehearsal absences, a maximum of three parent notes can be accepted during marching season. After that, doctor's notes are required. In the event of an emergency, excuses may be provided up to two school days after the student returns. **Excuses may not be accepted after the two-day period has passed.** (Please see "[How to Get an Absence Excused](#)" on p.7).

Attendance is critical to ensemble balance, blend, and quality. **In order to be eligible for performances, students must maintain a 90% attendance rate (excused or unexcused) to perform with their respective ensembles.** Students below the 90% attendance threshold will not be eligible to perform until they meet the 90% rate, and missed performances may negatively impact students' grades.

The one exception to this rule is for students participating under the **50/50 POLICY** (see p. 10). Field show marchers following this policy are expected to give band equal time to their fall sports. Failure to do so may result in students losing performance privileges.

## FINAL NOTES ABOUT GRADING

Though music is the reason we are all here, the terms *music* and *musicianship* are not mentioned in the *Grading* section because the directors believe that improved musicianship is a natural consequence of full and appropriate participation in the UHS Band program.

Students who have a **good work ethic** and **faithful attendance** find that they improve as musicians, and that band is a relatively easy "A." However, students must also remember that *they* are ultimately responsible for their own grades and musical development, and that band is NOT an *automatic* "A."

## DISCIPLINE

During band events, all University High School policies will be enforced as they would be during school hours. Students must abide by all applicable laws and school policies or risk suspension or dismissal from the band.

### Positive Attitude:

A positive attitude is its own reward. Fortunately, this program has long been comprised of students who understand this concept. Please uphold our tradition of positive culture.

### Performance Behavior Responsibilities:

#### ★ Wear the uniform with respect

Always promote a positive image. While in uniform, band members are not to use obscene language or engage in public displays of affection. Members must behave in a manner that represents our band, school, and community well. This rule (and any other applicable uniform rules) applies to both marching uniforms and concert attire.

#### ★ Understand that we are always being watched by the public

Our performance begins when we arrive - not simply when the first note is played - and ends after a formal dismissal from the directors. When in uniform, band students represent the entire University High School community.

#### ★ Be prepared to perform when directed

Pay close attention to the directors and field commanders. Particularly at football games, we will often have to play on very short notice.

#### ★ Band students ride the band buses to and from performances

If members wish to ride with parents, a note from the parents must be submitted prior to departure.

#### ★ During football game breaks, remain in uniform and return on time

At the third quarter break during football games, students are to remain in uniform unless otherwise directed, and **members should be back in their seats ready to perform at the end of the 3rd quarter**. Students must be seated and ready to play when the game clock reads 0:00, or risk losing participation points and/or future break privileges.

## ATTENDANCE AND PUNCTUALITY

Performances for the 2025-2026 school year are outlined at [www.uhsband.net/calendar](http://www.uhsband.net/calendar). The calendar is now a live document that may be updated from time to time. Please check the calendar regularly. **Remind messages** will be sent in the event of significant changes.

It should be noted that all listed events do not involve *all* band students, so please be aware that students are not required to be at each event listed if they do not perform in the ensemble listed. However, ***attendance at all rehearsals and performances in which students perform is required.***

**We will follow the WVSSAC practice participation rule that states that students must participate in 12 practices (rehearsals) before they are permitted to perform.**

**Being "On Time" means being at least ten minutes early.** Rehearsals, performances, and departure times are just that - not arrival times.

## SPORTS CONFLICTS

Every interested student is allowed to participate in the UHS Band. We understand that many band students also wish to participate in fall sports. We offer two options to deal with conflicts that arise between band and sports schedules.

### Parades Only:

Students playing in fall sports such as football, volleyball, soccer, cross country, or cheer have the option of marching in parades only. **Guard members and Marching Band OT participants are not eligible for Parade-Only status.** Swim Team students are also ineligible as swimming season begins as the marching season is finishing.

Parade-Only marchers must be in a concert ensemble (Symphonic Winds or Concert Band).

Band students who play fall sports must realize that there will be times that they will have to miss rehearsals/practices and performances/games of both activities should they choose to do so (see "50/50 Policy" below).

### 50/50 Policy:

Students who march in the field show and play *ANY* fall sport or activity are expected to split time evenly between band rehearsals and performances, and sports practices and events. It is unfair to the other members of the band for students to miss more rehearsals and/or performances than necessary.

Attendance at performances and games take precedence over attendance at rehearsals and practices. Students should use the following as a guide when deciding which activity to attend:

**Band Rehearsal vs Sports Practice**

Attend the sports practice the first time the conflict arises & band rehearsal second; or vice versa.

**Band Rehearsal vs Sports Event/Game**

Attend the sports event/game.

**Band Performance vs Sports Practice**

Attend the band performance.

**Band Performance vs Sports Event/Game**

Attend the band performance the first time the conflict arises & sports event/game second; or vice versa.

**Note:** The 50/50 policy is only applicable for field show participants. Parade marchers **must** attend at least one designated parade rehearsal prior to parades. Please see the current [event calendar](#) for these dates.

Students must inform directors **in advance** if they plan to miss a rehearsal or a performance due to a sports-related conflict. **Failure to do so may result in the absence being considered “unexcused” and may negatively affect the student’s grade.** Additionally, it is the student’s responsibility to obtain any information that was missed during an absence.

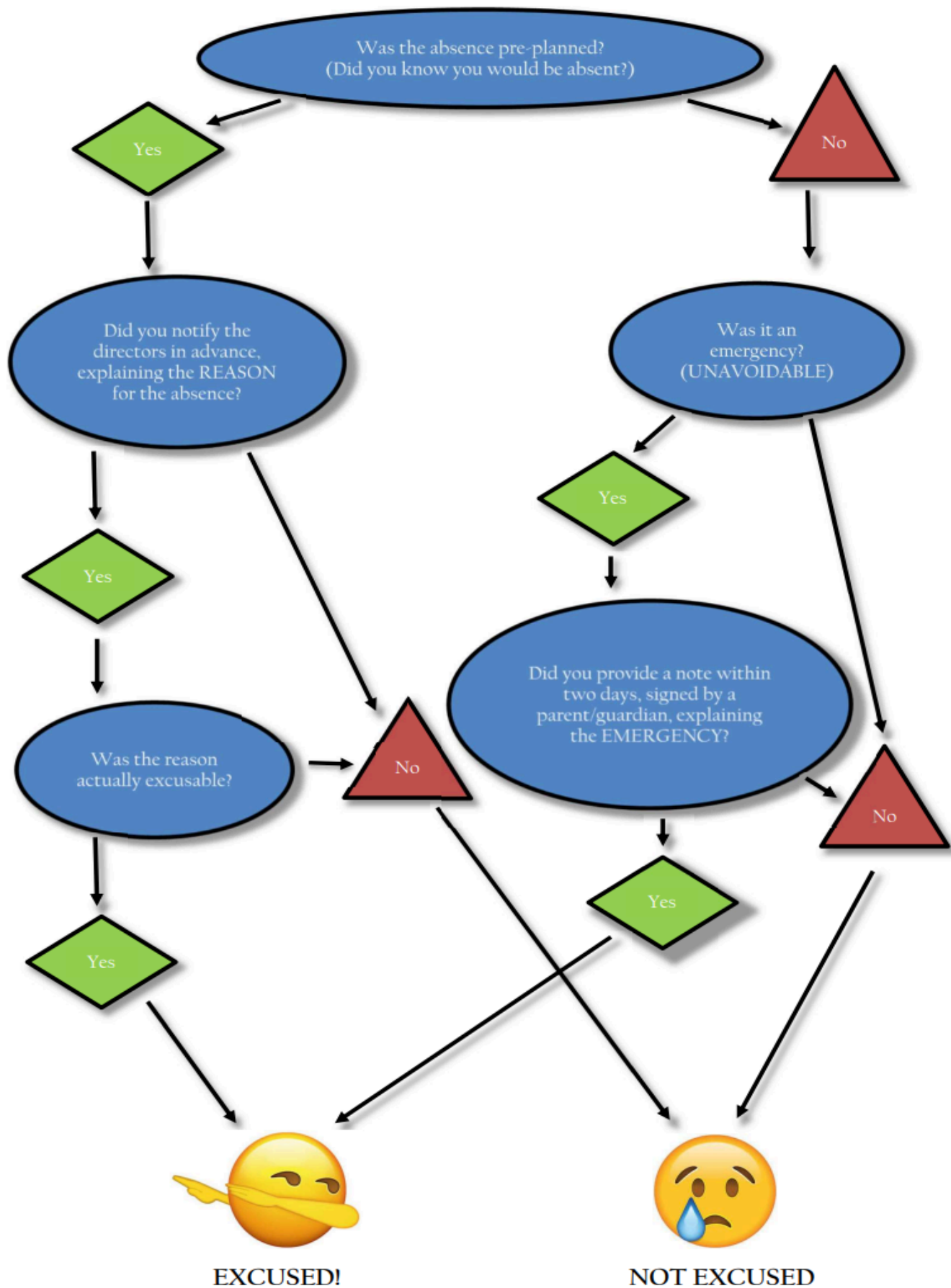
The 50/50 policy assumes that the coaches of the individual sports in which students participate are willing to allow students to miss sports practices and events. The rule is designed to allow students to participate in fall sports and participate in band. However, students *and coaches* must remember that while sports are extracurricular, band is co-curricular - and students who fail to meet the 50/50 requirement, even as a result of coaches’ requirements, may see their grade suffer.

## FINAL NOTES ABOUT ATTENDANCE

While the attendance policy is in place to discourage unexcused absences, it is our hope that students will understand the importance of faithful attendance at every UHS Band rehearsal and performance. In the end, the overall quality of the UHS Band will be determined by the dedication of the students involved.



## HOW TO GET AN ABSENCE EXCUSED



# UNIFORMS

## Definition of Common Terms:

### Full Uniform

Consists of band pants, jacket, black band shoes, **full-length black socks**, UHS Band t-shirt or sectional shirt, helmet/plume (sometimes ball cap instead of helmet).

### Travel Uniform

Consists of all but the uniform jacket and helmet/ball cap, which can be carried separately.

## General Information:

- Arrive at all football games or parade performances in **Full Uniform**, unless directed otherwise.
- For performances away from UHS or downtown Morgantown, all members must board and disembark the buses at UHS in **Travel Uniforms**, unless directed otherwise.
- If you own only one band shirt, please wash it between performances. Additional shirts are \$15.
- Never wear an unzipped uniform jacket on your shoulders in public. All the way on - or all the way off.
- All members are responsible for bringing every uniform component to *EVERY* performance. ***Students who come to a performance without their full uniform risk not being allowed to perform and receiving an "unexcused" absence.***
- The uniform should always be worn clean and free of wrinkles.
- Near the conclusion of the school year, jackets, pants, hats, garment bags, and hat boxes must be checked back into the band. Students are financially responsible for all assigned items.

## Uniform Care - Jackets, Pants, Garment Bag:

- Always hang up uniforms after a performance. Fold the pants on the crease and place on a hanger.
- After performances, always hang the uniform in a dry place to allow moisture to escape before placing it in a garment bag for storage.
- Dry-clean as needed to remove moisture, perspiration, and dirt. Use a reputable dry cleaner.
- Ask for permission from the Uniform Chair before making any alterations or repairing uniforms (replacing buttons, snaps, etc.). See chaperones for replacement buttons, snaps, etc.
- **Treat uniforms with extreme care A full band uniform costs over \$800.00.**

## Uniform Care - Shoes:

- Clean shoe surface with a leather cleaner product for each performance.
- Clean heel and sole edging as well as shoe surface.
- Store shoes in a plastic bag before placing them in the garment bag.

## **Uniform Care - Hat:**

- Store hats (both helmet and ball cap) in the hat box and hang it with the garment bag.
- Hats should be kept clean and free of fingerprints.
- The band cannot issue “loaner” helmets to students who forget helmets for performances.

## **CONCERT ATTIRE**

### **Concert Band & Jazz Band:**

Concert Black attire, which consists of ALL BLACK pants, dress shoes, socks, shirts or blouses.

#### **The following clothing items are off-limits:**

- No skirts, dresses, or leggings.
- No sweatshirts or sweatpants.
- No clothing with visible writing.
- No tennis shoes with white accents (No “Chuck Taylors”)
- No white socks with black pants and black shoes.

Students should always present a dignified image when wearing concert attire.

### **Symphonic Winds:**

Tuxedos and gowns. Band-owned tuxes and gowns must be worn for band functions only and are not for personal use. Occasionally, the Symphonic Winds may perform in less formal attire. In this event, standard concert attire will be used as listed above.

## **FINANCIAL RESPONSIBILITIES**

While Monongalia County Schools are generally better off financially than many of our counterparts throughout West Virginia, the county, state, and school provide the UHS Band with a fraction of what is necessary to operate a band program over the course of a year.

We must raise our own funds to cover much of the cost for uniforms, equipment and equipment maintenance, transportation, and numerous other expenses. The support to maintain the band program is provided by the UHS Band Boosters.

## Financial Responsibilities:

### **BOF | Band Operating Fee**

The Band Operating Fee (BOF) is a \$350.00 fee per band FAMILY that is used to run the band. This money goes to the general fund to be used for band-related expenses such as instructional staff, transportation, equipment purchases and repair, food, and various other band-related expenses.

**BOF** is for band-related expenses and is paid by every band family

**\$350**

**Note:** Siblings only pay \$350.00 total, not \$350.00 each.

### **CUED | Fees for Camp, Uniform, Equipment Rental, and Dry Cleaning**

CUED fees are charged based on the activities that are relevant to each student, as follows:

**Band Camp\*** is for field show marchers; due before band camp **\$200**

**Uniform Rental** is for use of marching/guard uniforms; due when uniforms are distributed **\$40**

**Tux and Gown Rental** is for use of tuxes/gowns (Symphonic Winds); due when distributed **\$25**

**Equipment Rental** is for school-owned instruments/guard equipment; due when distributed **\$25**

**Dry-Cleaning** is for year-end cleaning of marching uniforms; due when they are distributed **\$25**

*\*For families with more than one student in band, there is a 25% discount on the CUED fees for second, third students, etc.*

### **Other Expenses**

The following is a list of *estimated* personal expenses that students may incur in addition to the fees paid to the Band Boosters.

**Band Shoes** (Black band shoes used by MMS / WMS are the same as we use, if they still fit) **\$35**

**Sectional Shirts** (Optional) **\$12**

**Replacement Band ball caps** (Everyone receives ONE free ball cap) **\$12**

**Replacement Band t-shirts** (Everyone receives ONE free band t-shirt) **\$15**

**Misc. Supplies** (Reeds, Drumsticks, Mallets, etc.) **\$10-50**

**Uniform Cleaning** (Uniforms should be dry-cleaned at least once each year) **\$25**

## Payment Options:

Band fees may be paid by cash, check, or credit card.

## FUNDRAISING OPPORTUNITIES

The Band Boosters sponsor two fundraisers during the year that allow students to earn credit for paying their financial obligations (BOF, CUED feeds, trips, etc.). Students are not required to participate in fundraisers. However, to reduce the amount owed, or to avoid receiving a bill altogether, we recommend that students take advantage of fundraising opportunities.

## **Lifetime Hunting and Fishing License Raffle:**

The Lifetime Hunting and Fishing License Raffle is the first fundraiser of the year. The prize is a check for \$805.00, the amount of a West Virginia Lifetime Hunting and Fishing License. Tickets cost \$5.00 each, and we begin selling during summer band. The drawing is held during the final home football game each year.

Each student receives one packet containing 10 tickets and can return for as many more packets of 10 as they can sell. Student accounts will be credited for 60% of their sales. Prizes are awarded to the top sellers.

## **Fruit Sale**

The Fruit Sale begins in mid-October and runs through the start of Thanksgiving Break, and fruit is distributed during mid-December.

Each student receives a packet containing instructions, sales slips, and for band veterans, a list of previous years' sales. Student accounts will be credited for 25% of their sales. Prizes are awarded to the top sellers.

## **VOLUNTEER OPPORTUNITIES**

The band needs many volunteers to run smoothly. To encourage parents/guardians to volunteer, the Band Boosters provide volunteer credits toward the BOF. Parents can earn up to \$175 off their child's BOF by volunteering.

Parents must sign into events to receive credit. Each student account will be credited only once per event (even if more than one parent is volunteering), except for the Showcase of Bands, for which families can earn two volunteer credits. Students who volunteer for events receive community service hours.

**Note:** Any parent/guardian volunteers that are in direct, unsupervised contact with students must undergo a background check for the safety of our students. Monongalia County Volunteer Training information can be found at [www.uhsband.net/boosters](http://www.uhsband.net/boosters).

### **Potential Volunteer Activities:**

#### **Boosters Officers**

Band Boosters officers, including the president, vice-president in charge of the fruit sale and showcase, the treasurer, and secretary, have their child's \$350 BOF waived.

#### **Showcase Chairs**

Showcase Chairs receive a \$175 credit toward their child's BOF.

### **Uniform Assistance**

Helpers are needed to hem and mend marching uniforms. A minimum of 4 hours is required for a \$25 volunteer credit. This can be accumulated over multiple days.

### **Band Camp Helpers**

Parents are needed to assist with band camp. These responsibilities include preparing and serving food and drinks throughout the day, as well as providing first aid if needed. A minimum of 4 hours is required for a \$25 volunteer credit.

### **After-School Helpers**

Volunteers are needed to help students during after school practices. A minimum of 4 hours is required for a \$25 volunteer credit. This can be accumulated over multiple days.

### **Football Games**

The band needs volunteers to help at football games. Assistance during one game, including some activities before and after the game, are required for a \$25 volunteer credit.

### **Chaperoning Regular Trips**

The band needs volunteers to supervise students on regular regional trips. One trip will earn a \$25 volunteer credit.

### **Showcase of Bands**

The UHS Band hosts its Showcase of Bands during the fall each year. Parents may volunteer in numerous capacities. Parents will receive a \$50 volunteer credit for this event. A maximum of two adult family members can volunteer for this event at \$50 credit per person.

#### **ION SCHOLARSHIP**

The Band Boosters offer a \$175 scholarship toward students' BOF for students who switch from their regular instrument to an **Instrument of Need** (ION). Instruments of need are determined on a year-to-year basis.

To qualify, students must not already play the instrument of need, must continue to play instruments for the entire school year, and must make reasonable progress as determined by the directors. Whenever possible, directors will work directly with the students.

The number of scholarships awarded will be based on the availability of the instruments and will be awarded on a first come, first served basis.

## STUDENT ACCOUNTS

Each band member has a student account that is managed by **CutTime** (see the following section to learn more about **CutTime**). Account credit, as well as balances due, will carry over from year to year. For students that graduate or leave the program, credits can be transferred to a sibling that is currently in the band or that will join in the school year immediately following. Otherwise, any unused student account monies will be transferred to the Band Boosters' Financial Assistance fund (see below). Therefore, the Band Boosters cannot grant cash refunds.

Every two years, the band takes a major trip. At the time of these trips, student accounts must be current (or on an installment plan) for students to be eligible to participate.

## FINANCIAL ASSISTANCE

For families that have difficulty meeting financial obligations by the dates indicated, the Band Boosters can arrange mutually agreeable payment plans and/or provide financial assistance on a case-by-case basis to help defer the cost of larger band expenses.

Payment plans are available to all. To qualify for financial assistance, students must be on free or reduced lunch, must notify the director in advance whenever possible, and ***agree to participate in all fundraisers to the best of their ability***. The band keeps all financial assistance matters in strict confidence.

## DELINQUENT ACCOUNTS

The UHS Band Boosters are a nonprofit organization that relies heavily on band fees to operate. We understand that some families may have trouble paying band fees in a timely manner, and ***we are always willing to work with these families***. However, to operate effectively, we must collect BOF and CUED feeds.

The band may send **UNCOLLECTED DEBT TO A COLLECTION AGENCY** unless prior arrangements have been made.

## CutTime

UHS Band Boosters uses **CutTime** for its student financial accounting.

Please review the videos at <https://gocuttime.com/features/see-cuttime-for-guardians>, and specifically "**Check Balances and Make Online Payments**." There is also a video that shows how you can invite friends and family to donate to your student.

At the beginning of every month, **CutTime** will issue a text with a link so that parents can see their student accounts and pay on their account. It is vital that Mr. Palmer has an accurate parent cell phone number on file so that parents can receive these updates.

- **Band Camp fees** are due at the beginning of Band Camp.
- **Uniform and Dry Cleaning fees** are due when uniforms are distributed.
- **Instrument Rental fees** are due when instruments are distributed.
- **Tux and gown fees** for Symphonic Winds members are due when they are distributed.
- **The Band Operating Fee (BOF)** is due by the end of the calendar year.
- **Volunteer hours** and **fundraising earnings** will also be tracked in **CutTime**.

## INSTRUMENT CARE

### Winds:

- Keep instruments and cases clean.
- Handle instruments with care. Abuse or neglect may result in loss of school instrument use - see Band Instrument Rental Agreement.
- Reed players always need at least **three working reeds**. Reeds, mouthpieces, cleaning supplies, etc. are the student's responsibility.
- Brass players need the correct mutes for performances and rehearsals. The UHS Band has a limited number of mutes available for use.

### Percussion:

- Percussion areas should be cleaned and organized daily.
- Percussionists must have their own sticks and mallets for rehearsals and performances. The UHS Band will provide a limited number of certain types of sticks and mallets for use during performances. Any damaged UHS percussion equipment must be replaced by the students unless it is a result of normal wear and tear.



- Carefully pack and unpack all equipment and be cautious when setting the drums on potentially damaging surfaces.

### **Color Guard:**

- All equipment is the responsibility of the student to whom it is assigned.. Students must pay for lost or damaged equipment.

### **All Sections:**

- Repair or report damaged instruments immediately.
- Do not trade instruments without director approval.
- Pack and unpack your own instrument.
- Always carry a pencil.

#### **FINAL NOTES ABOUT INSTRUMENTS**

Make sure your instrument is always in good working order.

Full participation credit can only be earned with all necessary, working equipment.

Students using school instruments are responsible for keeping them in good working order.

## **SUMMER BAND**

### **Attendance:**

Field Show marchers are expected to attend all summer band rehearsals, both for the full band and for their individual sections, unless excused in advance.

As previously mentioned, we will follow the WVSSAC practice participation rule that states that students must participate in 12 practices (rehearsals) before they are permitted to perform.

Additionally, our Annual **Kennywood** trip is a reward for field show marchers who have three or fewer excused absences and **zero** unexcused absences. Parade marchers are not eligible for the Kennywood trip. Students who accumulate many unexcused summer absences may be removed from the program.

## **Precautions:**

We generally only rehearse outside in the morning and evening hours to avoid the midday heat. We also supply water at rehearsals and give the band water breaks often. We will have parents at most rehearsals to handle emergencies. Students should take the following precautions:

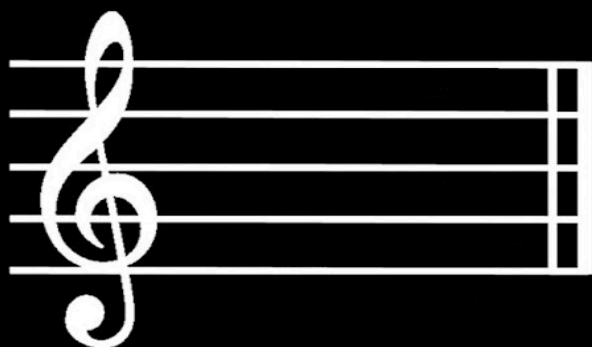
- ★ Eat breakfast
- ★ Dress in light, loose-fitting clothes
- ★ Wear sunscreen
- ★ Drink lots of water - avoid soda or dairy products
- ★ Bring a water bottle to drink during rehearsals
- ★ If feeling ill, inform a parent volunteer

## **What to Bring to Summer Band Rehearsals:**

- ★ Instrument
- ★ Music
- ★ Pencil
- ★ Water bottle
- ★ Comfortable shoes with socks (we do not march in sandals or flip flops)
- ★ Cool, loose fitting marching clothes and a hat

### **FINAL NOTES ABOUT SUMMER REHEARSALS**

The weather is hot at the beginning of the marching season and cold at the end of the marching season. All bands must deal with the elements. Dress appropriately, eat well, and stay hydrated and you will be fine.



## TWENTY(ish) KEYS TO SUCCESS IN BAND...

1. **LISTEN**... to examples of the music and genres you are playing
2. **LISTEN**... across the band, back, forward, etc.
3. **LISTEN**... for intonation, style, balance, and blend
4. **DEMONSTRATE** good posture ... **BUSFFOF!**
5. **MASTER** the vocabulary of your instrument ... **KNOW** its full range and tendencies
6. **BREATHE** together in order to **ENTER** together
7. **PLAY** with a good characteristic sound for your instrument
8. **PLAY** musically and with emotion
9. **PLAY** with the "Pyramid of Sound" in mind ... *in general*, low winds louder, upper winds softer
10. **BE AWARE OF** and **FOLLOW** all musical markings ... key signatures, articulations, dynamics, etc.
11. **KNOW** your place in the musical hierarchy... are you the melody, counter-melody, or accompaniment?
12. **ARTICULATE** clearly and appropriately
13. **COUNT**... always, but *especially* during periods of rest
14. **SUBDIVIDE**
15. **REMEMBER** that mistakes of *commission* are preferable to mistakes of *omission*
16. **RESPECT** the rehearsal process
17. **WATCH** your conductor
18. **SEEK** private instruction
19. **IMPROVE** a little every day
20. **HAVE FUN** and **APPRECIATE** the gift of musicianship



Class of 2014

# UNIVERSITY HIGH SCHOOL ALMA MATER

S.A.T.B.

Though the pass - ing years may part us, we will e'er be true,

This system contains the first two staves of the musical score. The vocal parts (Soprano, Alto, Tenor, Bass) are written on a grand staff with a treble and bass clef. The lyrics are: 'Though the pass - ing years may part us, we will e'er be true,'. The piano accompaniment is on a grand staff with a treble and bass clef. The key signature is three flats (B-flat, E-flat, A-flat) and the time signature is common time (C).

to our dear old Al - ma Ma - ter: Hail, oh Hail to you.

This system contains the next two staves of the musical score. The vocal parts continue with the lyrics: 'to our dear old Al - ma Ma - ter: Hail, oh Hail to you.'. The piano accompaniment continues. The key signature and time signature remain the same.

We will ev - er sing to - geth - er songs of vic - tor - y,

This system contains the next two staves of the musical score. The vocal parts continue with the lyrics: 'We will ev - er sing to - geth - er songs of vic - tor - y,'. The piano accompaniment continues. The key signature and time signature remain the same.

to our dear old Al - ma Ma - ter: Hail, Oh, Hail to thee.

This system contains the final two staves of the musical score. The vocal parts continue with the lyrics: 'to our dear old Al - ma Ma - ter: Hail, Oh, Hail to thee.'. The piano accompaniment continues. The key signature and time signature remain the same.